

THE LION HOTEL

GET ONLINE AT THE LION



Any Wi-Fi* enabled computer should be able to connect to our wireless broadband connection automatically. Just click your Internet Icon.




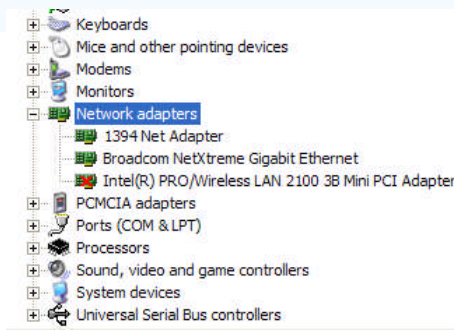
If your computer does not connect it could be due to one of the following issues.

- A. Your Wi Fi is not turned on
- B. You are attempting to connect to the wrong network.
- C. Your LAN settings are not on Automatic

A. Turning On your Wi Fi

(or you do not have Wi Fi on your PC)

The Wi-fi icon looks like this  and is usually indicated by a blue light on your PC. If this light is off, turn it on by following these actions:
Start > Control Panel > System > Hardware > Device Manager > Network Adapters



If the Wireless LAN Adapter has a red cross on it, double click on the red cross, and click enable.

This should then enable your Wi fi, and a blue light should appear on your computer.

If there is no wireless adapter listed in Device Manager, chances are you don't have Wi fi on your computer.

B. You are attempting to connect to the wrong network.

Your computer should automatically connect to the correct network. You can check this by clicking on the small computer icon located next to the clock in the bottom right of your screen.



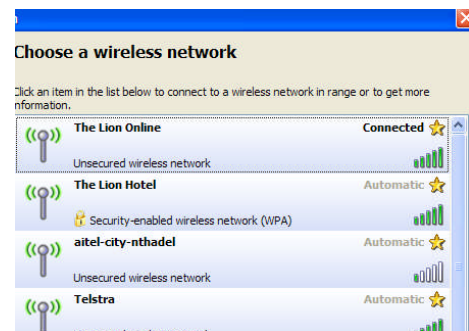
Click on this icon, > Click on View Wireless Networks.

Your computer will list all of the Wireless Networks in range. You should be connected to **'The Lion Online'**

If you are not connected double click on the

 icon and follow the prompts.

A warning might come up stating that it is not a secure connection. Click on **Connect Anyway**.



C. You are connected but cannot load a web page

This occurs when your LAN settings are set to proxy. To disable Proxy settings follow these actions.
Start > Control Panel > Internet Options > Connections > LAN Settings > **'tick'** automatically detect settings. (No other box should be ticked)
You may need to re tick this box when going back to the office / home to connect to your usual network.

